



CommCenter® Single Message Board Level

Model 300SMB

PROVIDES A SINGLE CUSTOM MESSAGE

- Designed for OEMs
- Available in 24VDC
- High-quality, non-volatile playback
- Messages can be up to 16 seconds in length
- UL Recognized

The Federal Signal Single Message CommCenter® Model 300SMB provides a single 16-second digital message. Melodies, voice messages, tones and signals are available, including the pre-recorded CommCenter Standard Library or custom recorded messages. The Federal Signal Model 300MCDK (page 204) can be used to record custom messages in the field.

The 300SMB CommCenter is suited for price-sensitive, single-message OEM applications. The 300SMB is a board level device that can be incorporated into an OEM product.

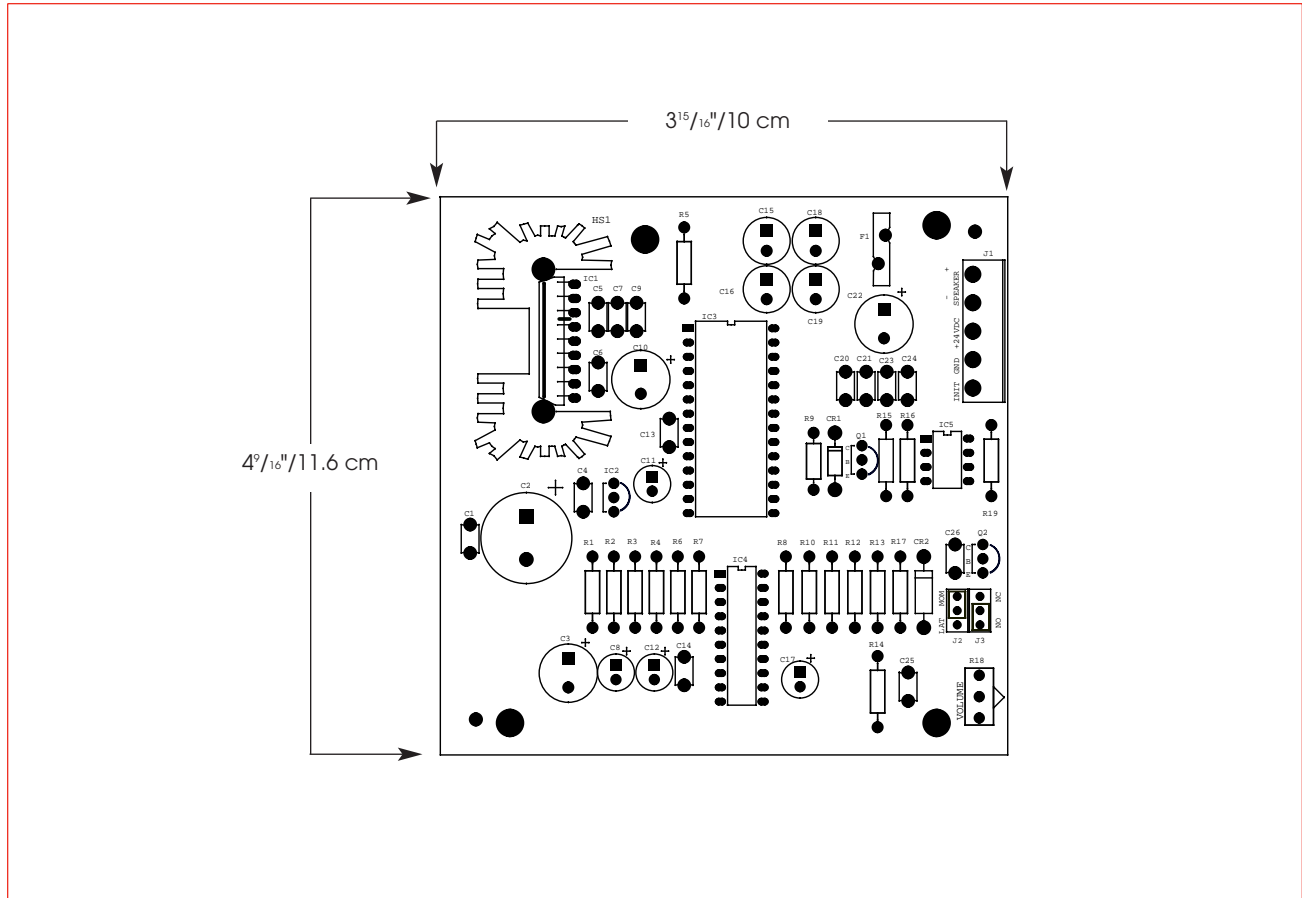
The 300SMB Single Message CommCenter is preset for initiation from a normally open (N.O.) momentary contact. A jumper setting on the PC board allows the initiation input to be changed to a normally closed contact. Another jumper switches the unit from a momentary contact to a latched contact. A momentary contact plays the message through for as long as the contact is held and finishes the final message. A latching contact plays the message as long as the contact is held, stopping mid-message if the contact is removed.

The 300SMB has both a 10Vrms (unbalanced) output and a 25Vrms (balanced) output. The 10Vrms output is useful when utilizing existing SelecTone® speaker amplifiers and connector kits. The 15-watt, 25Vrms output can drive 15 watts of transformer coupled speakers or AM25CK connector kits used with SelecTone speaker/amplifiers. When used with AudioMaster® transformer-coupled speakers, or the AM25CK, the 25Vrms output creates a balanced line and helps provide noise-free audio output. Volume adjustment controls the sound level.

A single 300SMB is capable of driving two 8-ohm speakers.



SINGLE MESSAGE COMMCENTER® (300SMB)



SPECIFICATIONS

Tone Output Levels Max. Load:		
Unbalanced Signal Line		10Vrms (25 ohm max)
Balanced Signal Line		25Vrms (40 ohm max/15 watts)
Signal to Noise Ratio (<1.5% THD):		(chip input) 67dB
Voltage Requirements:		24VDC
Current Draw:		
Operating		840mA @ 24VDC
Operating Temperature	32°F to 120°F	0°C to 49°C
Net Weight:	0.15 lbs.	0.07 kg
Shipping Weight:	0.5 Lbs.	0.23 kg
Height:	1.31"	3.3 cm
Width:	3.94"	10 cm
Depth:	4.56"	11.6 cm

HOW TO ORDER

- Specify model number
- Specify message
- Choose message source(s):
 - a. Select from Standard Library (page 159)
 - b. Provide script to be recorded in studio (additional charge incurred)
 - c. Provide cassette tape
 - d. Field record message using the Federal Signal model 300MCDK recorder/playback unit
- Please refer to Model Number Index 300SMB beginning on page 379